

## 11. SASD FEE AND RATE SCHEDULE

The fees and rates in the following sections are adopted by the Board of Directors.

### 11.1 SASD Sewer Impact Fees

Effective through June 30, 2016

Category Description		Sewer Impact Fees	
		Relief	Expansion
Single-Family Residential Users	Parcels recorded prior to July 1, 2003	\$628 per ESD	\$2,637 <sup>1</sup> per ESD
	Parcels recorded on or after July 1, 2003	\$3,769 per net acre	\$15,822 <sup>2</sup> per net acre
Multi-Family Residential Users		\$3,769 per net acre	\$15,822 <sup>2</sup> per net acre
Commercial Users		\$3,769 per net acre	\$15,822 <sup>2</sup> per net acre
Non-Defined Commercial Users		\$628 per ESD	\$2,637 <sup>1</sup> per ESD
Public Parks and Public Schools		\$628 per ESD	\$2,637 <sup>1</sup> per ESD
Industrial Users and Groundwater Remediation Dischargers		Based on flow: \$45 per 1,000 gallons of flow based on maximum monthly discharge	
<sup>1</sup> Developer Project Costs: \$2,178, SASD Costs: \$459 <sup>2</sup> Developer Project Costs: \$13,069, SASD Costs: \$2,753			

Effective July 1, 2016–June 30, 2017

Category Description		Sewer Impact Fees	
		Relief	Expansion
Single-Family Residential Users	Parcels recorded prior to July 1, 2003	\$636 per ESD	\$2,856 <sup>1</sup> per ESD
	Parcels recorded on or after July 1, 2003	\$3,817 per net acre	\$17,134 <sup>2</sup> per net acre
Multi-Family Residential Users		\$3,817 per net acre	\$17,134 <sup>2</sup> per net acre
Commercial Users		\$3,817 per net acre	\$17,134 <sup>2</sup> per net acre
Non-Defined Commercial Users		\$636 per ESD	\$2,856 <sup>1</sup> per ESD
Public Parks and Public Schools		\$636 per ESD	\$2,856 <sup>1</sup> per ESD
Industrial Users and Groundwater Remediation Dischargers		Based on flow: \$45 per 1,000 gallons of flow based on maximum monthly discharge	
<sup>1</sup> Developer Project Costs: \$2,415, SASD Costs: \$441 <sup>2</sup> Developer Project Costs: \$14,490, SASD Costs: \$2,644			

## Effective July 1, 2017–June 30, 2018

Category Description		Sewer Impact Fees	
		Relief	Expansion
Single-Family Residential Users	Parcels recorded prior to July 1, 2003	\$661 per ESD	\$2,957 <sup>1</sup> per ESD
	Parcels recorded on or after July 1, 2003	\$3,968 per net acre	\$17,742 <sup>2</sup> per net acre
Multi-Family Residential Users		\$3,968 per net acre	\$17,742 <sup>2</sup> per net acre
Commercial Users		\$3,968 per net acre	\$17,742 <sup>2</sup> per net acre
Non-Defined Commercial Users		\$661 per ESD	\$2,957 <sup>1</sup> per ESD
Public Parks and Public Schools		\$661 per ESD	\$2,957 <sup>1</sup> per ESD
Industrial Users and Groundwater Remediation Dischargers		Based on flow: \$45 per 1,000 gallons of flow based on maximum monthly discharge	
<sup>1</sup> Developer Project Costs: \$2,500, SASD Costs: \$457 <sup>2</sup> Developer Project Costs: \$14,997, SASD Costs: \$2,745			

## Effective July 1, 2018

Category Description		Sewer Impact Fees	
		Relief	Expansion
Single-Family Residential Users	Parcels recorded prior to July 1, 2003	\$689 per ESD	\$3,062 <sup>1</sup> per ESD
	Parcels recorded on or after July 1, 2003	\$4,132 per net acre	\$18,374 <sup>2</sup> per net acre
Multi-Family Residential Users		\$4,132 per net acre	\$18,374 <sup>2</sup> per net acre
Commercial Users		\$4,132 per net acre	\$18,374 <sup>2</sup> per net acre
Non-Defined Commercial Users		\$689 per ESD	\$3,062 <sup>1</sup> per ESD
Public Parks and Public Schools		\$689 per ESD	\$3,062 <sup>1</sup> per ESD
Industrial Users and Groundwater Remediation Dischargers		Based on flow: \$45 per 1,000 gallons of flow based on maximum monthly discharge	
<sup>1</sup> Developer Project Costs: \$2,587, SASD Costs: \$475 <sup>2</sup> Developer Project Costs: \$15,522, SASD Costs: \$2,852			

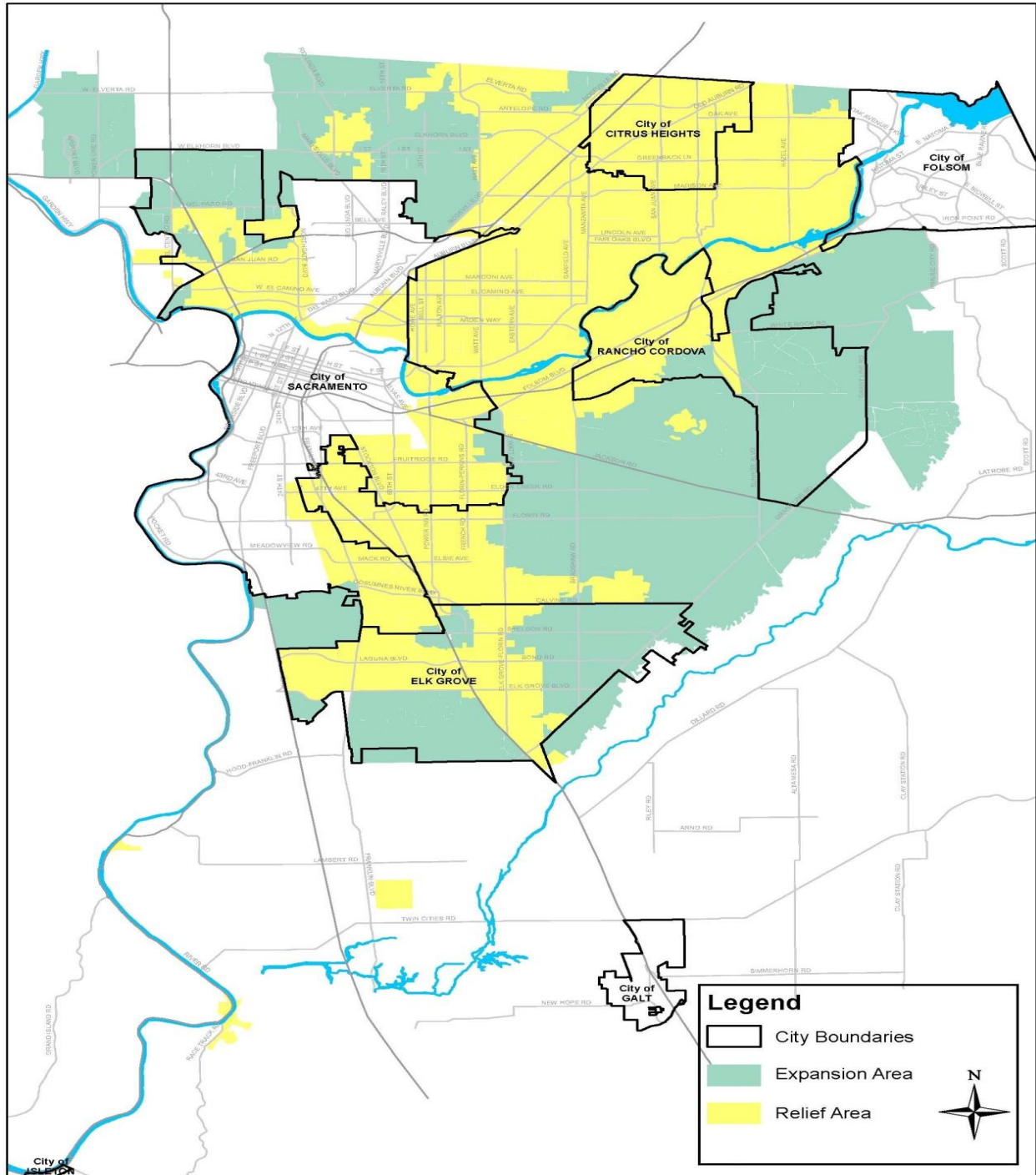
## 11.2 SASD Miscellaneous Fees

Category Description	Miscellaneous Fees
<b>Administrative Fee for Deferral of Sewer Impact Fees, Commercial and Industrial Projects</b> <i>(For New and Expanding Businesses)</i>	\$2,515 Administration Fee per project
<b>Application Fee / Administrative Fee for Deferral or Waiver of Sewer Impact Fees for Affordable Housing Projects</b> <i>(For Qualified Affordable Housing Projects)</i>	<ul style="list-style-type: none"> <li>• \$1,000 Application and Administrative Processing Fee for the first government entity listed on the application for fee deferral or waiver</li> <li>• \$275 Application and Administrative Processing Fee for each additional government entity listed on the application for fee deferral or waiver</li> </ul>
<b>Administrative Fee for Deferral of Sewer Impact Fees for Market Rate Residential Projects</b>	\$350 Administrative Processing Fee per building permit for which fees are requested to be deferred
<b>Sewer Tap Construction Fee</b>	<ul style="list-style-type: none"> <li>• 4-inch Lower Lateral to Main Line Tap: \$539</li> <li>• 6-inch Lower Lateral to Main Line Tap: \$577</li> <li>• 4-inch Lower Lateral to Manhole Tap: \$1510</li> <li>• 6-inch Lower Lateral to Manhole Tap: \$1524</li> <li>• 8-inch Lower Lateral to Manhole Tap: \$1561</li> </ul>
<b>Information Technology Recovery Fee</b> <i>(Recovers cost of ACCELA database management and development)</i>	<ul style="list-style-type: none"> <li>• Fee within city jurisdictions: 1% of total SASD and Regional San fees not to exceed \$100</li> <li>• Fee within unincorporated County: 4.5% of total County, SASD, and Regional San fees not to exceed \$350</li> </ul>
<b>Water Meter Reading Fee</b> <i>(For unreported meter readings by metered user)</i>	\$25 per meter reading
<b>Construction Inspection Costs</b>	Charge is based on time and material costs
<b>Technical Services</b> <i>(Covers SASD's cost of time and materials for special projects)</i>	Charge is based on time and material costs
<b>Administration Fee for Collector Reimbursement Agreements</b>	Cost for the District to administer the agreement is established at \$250 for agreements in the amount of \$10,000 or less, and \$500 for agreements in excess of \$10,000. Amount will be deducted from the initial reimbursement.

### 11.3 SASD Sewer Rates

Category Description	Sewer Rates
<b>Single-Family Residential Users</b> <i>(Monthly sewer service charge)</i>	\$19.85 per month (\$39.70 bimonthly)
<b>Multiple-Family Residential Users</b> <i>(Monthly sewer service charge)</i>	\$14.89 per month per unit (\$29.78 bimonthly)
<b>Commercial Users</b> <i>(Monthly sewer service charge)</i>	\$19.85 multiplied by the Enterprise/Use Factor in the Ordinance, Section 6.8.3
<b>Non-Defined Commercial Users</b> <i>(Monthly sewer service charge based on measured flow discharged)</i>	\$19.85 per 9,300 gallons of flow
<b>Industrial Users and Groundwater Remediation Dischargers</b> <i>(Monthly sewer service charge based on measured flow and loadings discharged)</i>	\$72.73 per million gallons of flow <u>(+) \$5.10 per 1,000 lbs of Total Suspended Solids</u> Equals Total Sewer Service Charge
<b>Temporary Discharge Permit Users</b> <i>(Charges based on flow and loadings discharged)</i>	\$72.73 per million gallons of flow <u>(+) \$5.10 per 1,000 lbs of Total Suspended Solids</u> Equals Total Sewer Service Charge

## 12. SASD RELIEF/EXPANSION AREA MAP



The map is a representation of the relief and expansion areas as of the adoption date of this Ordinance. Contact SASD at (916) 876-6100 to obtain information on which area a parcel is located.